

<<< COSMOS 2009 in Ehime – Program >>>

2009 June 15 – 18

Center for Information Technology, Ehime University
Hosted by Research Center for Space and Cosmic Evolution

IMPORTANT INSTRUCTIONS

To enable more time for thoughtful discussions, the talks should follow the guidelines :

1. Talks should be 5 min with questions for 5 min.
2. Only 5 slides / each talk – this is FIRM.
3. Prepare extended PDF with more detailed talk and send it to "meeting2009@cosmos.phys.sci.ehime-u.ac.jp". These PDFs will be available for access at <http://cosmos.phys.sci.ehime-u.ac.jp/meeting2009/program.html>

It is most worthwhile if the 5 slides focus very specifically on your recent results and issues for which you would like discussion and questions.

June 15 (Mon)

9:00 – 10:00 Registration / Coffee

Posters – hung throughout meeting

- D. Looper [Selection for Separating Ultracool Objects from Quasars](#)
- M. Cisternas [The morphologies of type-1 AGN host galaxies](#)
- T. Murayama [ACS morphology of LAEs at z=4.9 in COSMOS field](#)
- K. Matsuoka [Cosmic Metallicity Evolution Traced by Active Galactic Nuclei and Its Application to the COSMOS data set](#)
- M. Kobayashi [A Theoretical Model for LAE in Hierarchical Galaxy Formation: Comparison with the LAEs at z=4.86 in the COSMOS 2-sq.degree Field](#)
- G. Lanzuisi [X-ray spectral analysis of sources in the Chandara COSMOS survey](#)
- C. Mancini [Are all high-z Early-Type galaxies really small?](#)

10:00 Introduction

Prof. Ryuichi Yatabe (Executive Director of Ehime University)

[Welcome Address from Ehime University](#)

Y. Taniguchi & N. Scoville [Logistics and Introduction of attendees](#)

10:10 Project Status & Data sets:

P. Shopbell [COSMOS Data Products: Current and Future](#)

Y. Taniguchi [New Suprime-Cam z'-band data](#)

H. McCracken [New COSMOS-H Data](#)

S. Lilly [ZCOSMOS: Overview of status and key results](#)

M. Elvis [Chandra COSMOS Survey: Status and New Proposal](#)

D. Sanders [New results from the S-COSMOS Survey](#)

V. Smolčić [320 MHz observations of the COSMOS](#)

A. Renzini [Status and Perspectives of the zCOSMOS-SINFONI Project](#)

11:30 LSS & Dark Matter :

N. Scoville [Large Scale Structure and Galaxy Properties to \$z = 2.5\$](#)

Q. Guo [Mock COSMOS surveys: galaxy formation in a simulated universe](#)

R. Massey [Weak Lensing --pix-by-pix CTE correction in COSMOS ACS images](#)

E. Semboloni [3-point Correlation Function](#)

12:10-12:40 Open Discussion

<<< Lunch >>> 12:40 – 14:00

14:00 AGN _ Part I:

A. Comastri [AGN Science and High z Quasars in COSMOS survey](#)

K. Iwasawa [Mean X-ray spectral properties of XMM-COSMOS AGN](#)

F. Civano [Finding goodies in the identifications of Chandra sources](#)

H. Hao [Type 1 AGN SEDs in COSMOS: Redshift Evolution](#)

M. Brusa [Obscured and Unobscured AGN population in COSMOS](#)

F. Fiore [Chasing highly obscured AGN in the COSMOS field](#)

E. Treister [The Obscuration of COSMOS AGN](#)

J. Trump [Obscuration and Fueling of AGN in COSMOS](#)

<<< Coffee >>> 15:30 – 16:00

16:00 – 17:30 Working Group Discussion

17:30 Session closed

Welcome reception at Matsuyama ANA hotel / 14F Dinning Room
19:00 – 21:00

June 16 (Tue)

8:30 Galaxy properties at $z < 3$ _ Part I:

- M. Carollo [Assembling Massive galaxies](#)
- G. Coppa [ZCOSMOS 10k sample: two classification methods for galaxies](#)
- O. Cucciati [zCOSMOS 10k-sample: Galaxy stellar mass and colour-density relation](#)
- L. Tasca [The relative role of environment and stellar mass in shaping galaxies](#)
- P. G. Perez-Gonzalez [Environmental effects on mass assembly of galaxies at \$z < 4\$](#)
- N. Arimoto [Absorption Lines Study of pBzK Galaxies with Subaru/MOIRCS](#)
- M. Onodera [NIR spectroscopic survey of pBzKs with Subaru/MOIRCS](#)

9:40 Star Forming Galaxies :

- J. Kartaltepe [Properties of 70 micron selected sources](#)
- C. Feruglio [Obscured star-formation and environment in S-COSMOS](#)
- L. Yan [SCOSMOS IRS Spectroscopy of Galaxies across the Green Valley](#)

<<< Coffee >>> 10:10 – 10:50

- A. Karim [Star formation history of mass-selected galaxies from radio stacking](#)
- R. M. Rich [Low Redshift Lyman Alpha Emitters in COSMOS](#)
- Y. Kakazu [Searches for Ultra-Strong Emission Line Galaxies in COSMOS](#)
- J. Huang [\[OII\] emission line galaxies in the intermediate redshift](#)
- Y. Ideue [Environmental Dependence of Specific SFRs at \$z \sim 1.2\$ in COSMOS](#)
- P. Ranalli [X-ray emitting, star-forming galaxies in the COSMOS field](#)
- D. Vergani [Physical properties of galaxies in their post-starburst phase](#)

12:00-12:30 Open Discussion

<<< Lunch >>> 12:30 – 14:00

14:00 High-z :

- P. Capak [The High-Redshift COSMOS](#)
- Y. Shioya [A Comparative Study of LAE and LBG using COSMOS-20](#)
- B. Mobasher [Comparison of properties of LAEs and LBGs in COSMOS](#)
- T. Saito [Comprehensive study of Ly-alpha blobs with Subaru COSMOS20](#)
- K. Sheth [CARMA observations of COSMOS](#)
- E. Schinnerer [Dust, Molecular Gas and Star Formation in High z Galaxies](#)
- A. Koekemoer [The High Redshift X-ray-Selected AGN Population in COSMOS](#)

15:10 LSS & Clustering (Clusters of galaxies):

- A. Finoguenov [X-ray galaxy groups in statistical studies of galaxy evolution](#)
- M. Salvato [Spectroscopic follow up of high z clusters/Optically varying sources in Cosmos/ photoz for chandra:differences from XMM](#)
- M. Tanaka [Progress report on X-ray clusters at \$z>1\$](#)

<<< Coffee >>> 15:40 – 16:30

16:30 – 18:00 Working Group Discussion

18:00 Session closed

June 17 (Wed)

8:30 AGN _ Part II:

- J. Silverman [AGN content of the zCOSMOS deep sample](#)
- E. Lusso [Panchromatic views of the evolution of supermassive black holes](#)
- T. Miyaji [New X-ray LF of AGNs in XMM-COSMOS and C-COSMOS](#)
- K. Jahnke [Tales of galaxies, black holes, and stuff falling in \(chapter II\)](#)
- A. Bongiorno [On the cosmic evolution of the scaling relations between black holes and their host galaxies as revealed by Broad Line AGN in the COSMOS survey](#)
- R. Gilli [The AGN-galaxy cross correlation function in COSMOS](#)

9:30 Clustering, Weak Lensing, and Galaxy Pairs :

- A. Leauthaud [Dark matter halos of galaxies and groups of galaxies](#)
- B. Meneux [ZCOSMOS: galaxy clustering as a function of luminosity and mass](#)
- L. De Ravel [zCosmos survey : Evolution of merger rates and environment at z~1](#)
- P. Kampczyk [Properties and environments of the close kinematic pairs in zCOSMOS.](#)

<<< Coffee >>> 10:10 – 10:40

- J. Taylor [Getting More out of Weak Lensing in COSMOS](#)
- J. Bergé [Weak gravitational lensing bispectrum in COSMOS](#)
- E. Jullo [High Resolution matter mapping in COSMOS field with lensing](#)

11:10 Galaxy properties at $z < 3$ _ Part II:

- S. Giodini [Stellar and Total Baryon Mass Fractions in Groups/Clusters at \$z < 1\$](#)
- M. Bolzonella [Environmental effects in the Galaxy Mass Function up to \$z \sim 1\$](#)
- C. Maier [Which galaxies contribute to the SFRD over the past 8 Gyr?](#)
- M. Sargent [The Evolution of the IR-Radio Relation](#)
- H. Messias [IR LFs for IRAC selected sources and ERGs in COSMOS](#)

12:00-12:30 Open Discussion

<<< Lunch >>> 12:30 – 14:00

14:00 – 14:30 COSMOS Special

K. Nel [Views of the cosmos](#)

14:30 – 16:00 Working Group Discussion

16:00 Session closed

<<< HOT-SPA --- ONSEN break >>>

Team Dinner at Funaya Ryokan (Japanese-style hotel)

19:00 – 21:00

June 18 (Thu)

9:00 Working Group Summaries

AGN

Data Products

High-z

Lensing

LSS

SF

mm/submm

<<< Coffee >>> 10:10 – 11:00

11:00 Report from SSC, Future Plans, & Discussion

12:30 Session Closed

<<<Excursion: half-day bus tour to Uchiko area and famous temples in Matsuyama>>>

Time Table

		8:30am	9am	10am	11am	12pm	1pm	2pm	3pm	4pm	5pm	6pm	7pm	
14 June	RCSCE 6F 674											Registration		
		8:30am	9am	10am	11am	12pm	1pm	2pm	3pm	4pm	5pm	6pm	7pm	
15 June	CITE 1F 105	Registration		Intro	Status & Data Set	LSS DM	Discu ssion	Lunch	AGN	Coffee	WG Discussion		Welcome Reception @ANA Hotel 14F	
	CITE 1F 104	Open for Attendee												
	RCSCE 4F 486								Open for Attendee					
	RCSCE 6F 674	Internet Room (Wireless LAN)												
		8:30am	9am	10am	11am	12pm	1pm	2pm	3pm	4pm	5pm	6pm	7pm	9pm
16 June	CITE 1F 105	z<3 galaxies	SF	Coffee	SF	Discu ssion	Lunch	High-z	LSS Cluster	Coffee	WG Discussion			
	CITE 1F 104	Open for Attendee												
	RCSCE 4F 486								Open for Attendee					
	RCSCE 6F 674	Internet Room (Wireless LAN)												
		8:30am	9am	10am	11am	12pm	1pm	2pm	3pm	4pm	5pm	6pm	7pm	
17 June	CITE 1F 105	AGN	Cluster ing	Coffee	Clust ering	z<3 galaxies	Discu ssion	Lunch	Speci al	WG Discussion		Hot Spa Break		Team Dinner @Funaya
	CITE 1F 104	Open for Attendee												
	RCSCE 4F 486								Open for Attendee					
	RCSCE 6F 674	Internet Room (Wireless LAN)												
		8:30am	9am	10am	11am	12pm	1pm	2pm	3pm	4pm	5pm	6pm	7pm	9pm
18 June	CITE 1F 105	WG Summaries		Coffee	Future Plan Discussion		Excursion (Uchiko Area and Temples in Matsuyama City)							
	CITE 1F 104	Open for Attendee												
	RCSCE 4F 486								Internet Room (Wireless LAN)					
	RCSCE 6F 674	Internet Room (Wireless LAN)												
		8:30am	9am	10am	11am	12pm	1pm	2pm	3pm	4pm	5pm	6pm		

CITE: Center for Information Technology, Ehime University (called simply "Media Center")

RCSCE: Research Center for Space and Cosmic Evolution (in Science Research Building 1)

Internet access by wired LAN is available in the conference room (CITE 1F 105).

Please prepare your own LAN cable (~ 1 meter).

Ehime Univ. Johoku Campus Map

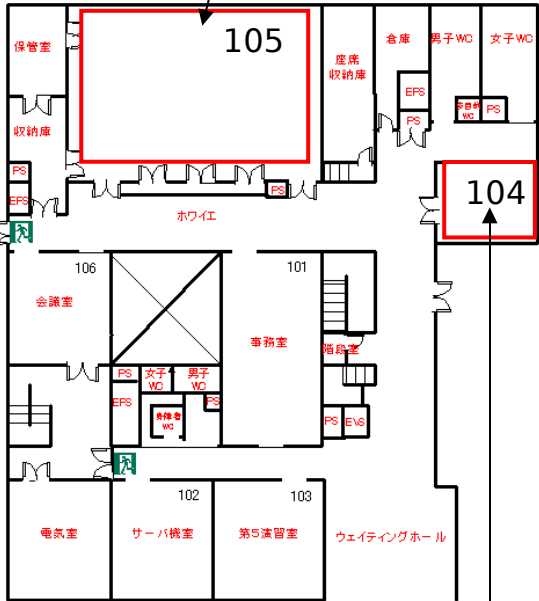
Science Research Building 1

Registration: 14 June 17:00-19:00
Reserved for COSMOS: 15 - 18 June
Internet room (w/ wireless LAN).

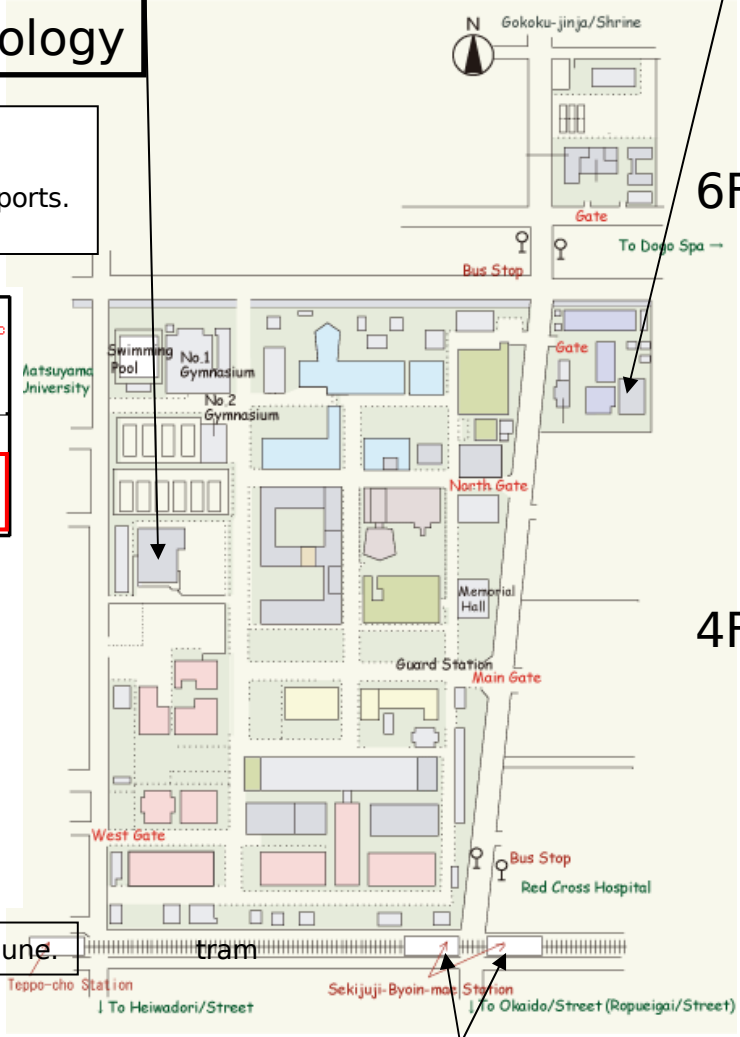
Center for Information Technology

Conference room: 15 - 18 June
Registration: 15 - 18 June
This room is equipped with LAN ports.
Please bring a LAN cable.

1F

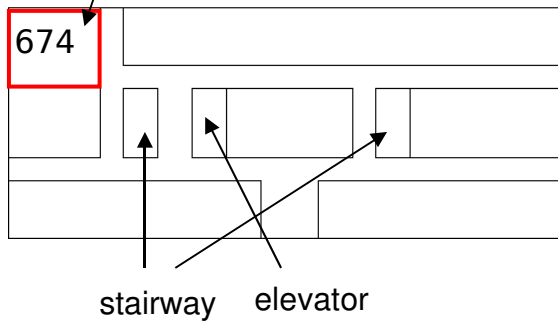


Reserved for COSMOS: 15 - 18 June.

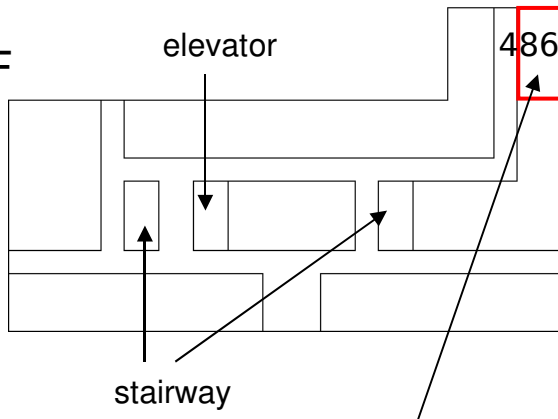


Sekijuji-Byoin-mae Station

6F



4F



Reserved for COSMOS:
15 June 15:00-18:00,
16 June 15:00-19:00, and
17 June 14:00-17:00.

